








**THE ONLY CHOCOLATE WRAPPING MACHINE IN THE WORLD:**

- 4 minutes mold replace without tools.
- The Smallest Pieces Wrapping.
- One Driving Shaft Technology.

**SPECIFICATIONS OF W-CH200.**

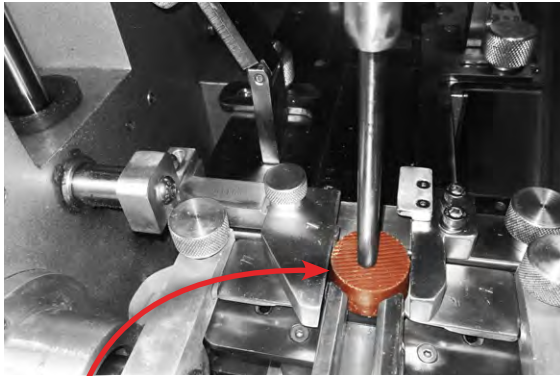
	<b>SPEED</b>	<b>135 P/MIN</b>
	<b>WEIGHT</b>	<b>650 KG</b>
	<b>ELECTRICITY FEED</b>	<b>220V SINGLE PHASE (50 - 60 HZ)</b>
	<b>CONSUMPTION</b>	<b>3 KW</b>
	<b>MACHINE DIMENSIONS</b>	<b>W 150 L 150 H 150 CM</b>
	<b>PNEUMATIC SUPPLY</b>	<b>NO NEED</b>

**WHAT IS IT ?**

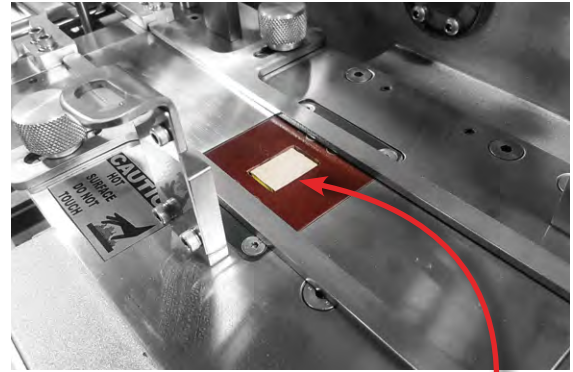
W-CH200 chocolate wrapping machine is ready to wrap 135 chocolate pieces per minute. W-CH200 provides the ability to lengthen, shorten, and center the wrapping paper film. It can save up to 12 different paper sizes which grant easy calibration. W-CH200 includes 3 optional molds which are comfortable and super-fast to replace it in only 6 minutes without the need for an expert to do it for you. Besides, the machine contains a digital counter that can count the wrapped chocolate pieces ,which can ease the production .process

**MECHANICAL PRINCIPLE:**

All Mechanical linkages in W-CH200 are driven by a single shaft ,which leads to mitigation in sound, flexibility in work ,and increase in speed. W-CH200 is the only wrapping machine in the world that is driven by a single shaft.



**ROUND PEICES  
DEVICE**



**WELDING DEVICE**



## ACCESSORIES

W-CH200 can be supplied by different devices on demand to improve the process of production and to adopt different wrapping types. Using accessory devices, W-CH200 can wrap round products or the product that need to be sealed (Metalized, Cellophane foil .....etc).

### AVAILABLE ACCESSORIES:

- Outer Paper device
- Welding device for Cellophane
- Photocell for printed paper
- Feeder for Labeling machine
- Format for different sizes and models
- Round Chocolate Device

## PRODUCT SAMPLE.

